



STATE OF CONNECTICUT

Office of Higher Education

2016-17 DEGREES AND CERTIFICATES COMPLETED AT CONNECTICUT HIGHER EDUCATION INSTITUTIONS

Introduction

The Connecticut Office of Higher Education (CT OHE) is re-introducing the Degrees Conferred Report which was produced annually by the Department of Higher Education for the Board of Governorø for Higher Education. This report is intended to provide insight into the state of degree production by Connecticut colleges and universities as well as offer comparisons against relevant prior years.

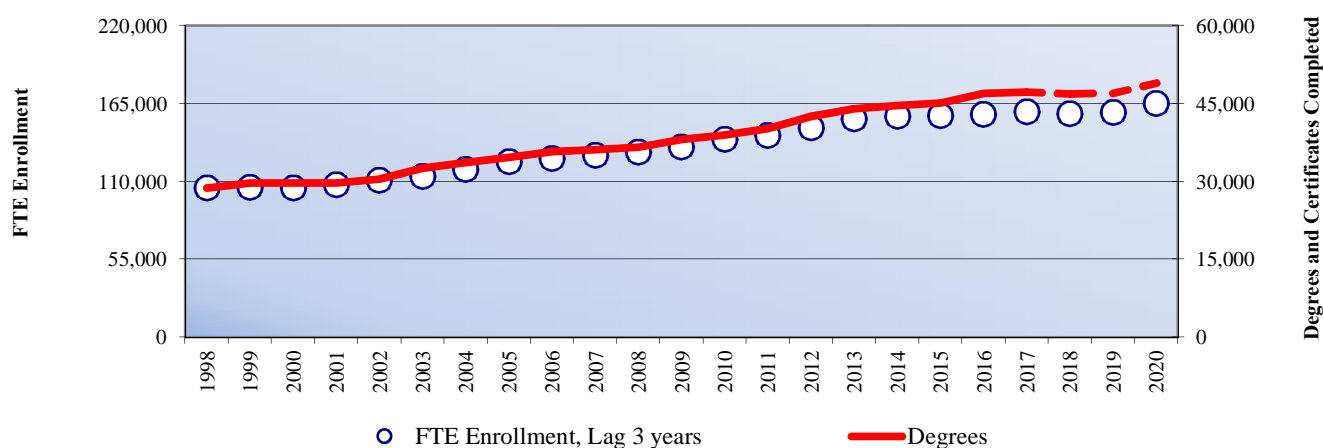
Data provided in this report is collected from higher education institutions by CT OHE in conjunction with reporting required by the Integrated Postsecondary Education Data System (IPEDS) of the federal government.

Increase in Degrees and Certificates

Students at Connecticut colleges and universities completed a record 47,221 degrees and certificates in 2016-17, up 0.5% from 2015-16. This increase represents the stateø 19th consecutive year of growth, with a 58.9% increase since 1998-99.

Degree and Certificate Completions Related to Enrollment

As in previous years, the number of degrees and certificates earned was closely related to the full-time equivalent (FTE) enrollment from prior years. The surge in enrollment in the early part of the 2000s was due to a large demographic cohort of traditional college-age students which unsurprisingly translated into an increase in the number of degrees earned. Over the most recent 20 years, changes in FTE enrollment account for 99.5% of variation in the number of postsecondary awards conferred. This high level of association using lead/lag time series analysis suggests that the number of degrees and certificates may decrease next year for the first time since 1989-99 before rising again the following two years.



The dotted line for degrees and certificates for 2017-2019 represent a projection based on FTE Enrollment. Dotted circles represent the actual statewide FTE enrollment for 2014-15, 2015-16, and 2016-17. FTE enrollment for this chart is calculated based on credit hours divided by 15 credit hours for full-time and 12 credit hours for part-time.

Consistent Distribution of Awards by Level over Time

While the total number of awards has increased significantly since 1996-97, the distribution of degrees and certificates among most award levels has remained relatively stable over time, except among associate's and doctorate degrees. In 2016-17:

- 49.7% of awards were bachelor's degrees compared to 48.3% in 1996-97.
- 23.3% of awards were master's degrees¹ compared to 24.1% in 1996-97.
- 4.7% of awards were doctor's degrees compared to 5.6% in 1996-97.
- The largest change percent distribution was observed among associate's degrees which represents 14.6% of awards, compared to 16.8% in 1996-97, although this decline was offset slightly by an increase in undergraduate certificates, which represents 4.6% of awards in 2016-17 compared to 2.9% in 1996-97.

Consistent Distribution of Awards by Higher Education Sector over Time

Similarly, the distribution of awards among higher education sectors also remained relatively stable over time, with largest changes occurring among the state's regional independent universities and national independent universities. Across the state in 2016-17, students attending:

- regional independent institutions earned 35.8% of awards, compared to 28.4% in 1996-97.
- the University of Connecticut earned 18.2% of awards, compared to 16.5% in 1996-97.
- the Connecticut State Universities earned 16.0% of awards, compared to 18.9% in 1996-97.
- Connecticut Community Colleges earned 15.1% of awards, compared to 15.7% in 1996-97.
- national independent universities earned 13.1% of awards, compared to 18.2% in 1996-97.
- other public institutions earned 1.7% of awards, compared to 1.7% in 1996-97.
- two-year independent institutions earned 0.03% of awards, compared to 0.7% in 1996-97.

Increase in Awards Earned by Students in Minority Race/Ethnicity Groups

A total of 12,346 degrees and certificates were earned by individuals from minority groups² in 2016-17, representing 26.1% of award recipients, up from 13.0% in 1996-97.

- Hispanic students earned 9.9% of awards in 2016-17 compared to 3.6% in 1996-97.
- Black, Non-Hispanic students earned 8.6% of awards in 2016-17 compared to 5.4% in 1996-97.
- Asian or Pacific Islander students earned 4.8% of awards in 2016-17 compared to 3.7% in 1996-97.
- American Indian or Alaska Native students earned 0.4% of awards in 2016-17 compared to 0.3% in 1996-97.
- White, Non-Hispanic students earned 56.4% of awards in 2016-17 compared to 76.9% in 1996-97.
- Award recipients whose race/ethnicity is unknown earned 8.2% of awards in 2016-17 compared to 3.9% in 1996-97.

Women Continued to Earn More Degrees and Certificates than Men

For several decades women have earned more post-secondary credentials than have men, and this pattern continued in 2016-17, with women earning 27,359 or 57.9% of all awards. Over the last 20 years, women attending Connecticut institutions earned over 135,825 more degrees and certificates than did men.

¹ Previous reports about completions have aggregated post-master's certificates with master's degrees. This report places post-master's certificates for all years in the category of graduate certificates or breaks them out separately.

² For the purposes of this report, minority groups are considered to be students reported as Black, Non-Hispanic; American Indian or Alaska Native; Asian or Pacific Islander; and Hispanic. Percentage calculations include the number of students whose race/ethnicity is unknown in the denominator; the increase in this proportion of individuals over time adds some uncertainty into the interpretation of these figures.

Degrees and Certificates by Discipline

Degrees and certificates awarded in the area of Health & Fitness outpaced growth in other areas, with the proportion of awards increasing from 12.0% in 1996-97 to 17.6% in 2016-17 (an annual difference of about +4,800 year to year). Credentials awarded in Science, Technology, Engineering & Math fields also increase to outpace growth in other areas, increasing from 12.2% of all awards in 1996-97 to 16.6% in 2016-17 (an annual difference of about +4,300 year to year). Conversely, the proportion of awards conferred in Social Sciences dropped from 14.5% in 1996-97 to 10.3% in 2016-17 (an annual difference of 663 year to year) and the proportion of awards conferred in Business dropped from 19.1% in 1996-97 to 17.3% in 2016-17 (an annual difference of about 2,600 year to year).

Table 1. 2016-17 Degrees and Certificates Completed at Connecticut Colleges and Universities by Institution and by Level

Institution	Undergrad certificate (< 1 year)	Undergrad certificate (1-2 years)	Associate's degree	Undergrad certificate (2-4 years)	Bachelor's degree	Postbacc. certificate	Master's degree ³	Post-master's certificate ⁴	Doctor's degree - research/scholarship	Doctor's degree - prof. practice	Grand Total
University of Connecticut			30		5,523	251	1,944	62	361	440	8,611
Connecticut State University System			21		5,883	44	1,402	191	26		7,567
Central Connecticut State University					1,957	44	601	108	13		2,723
Eastern Connecticut State University			7		1,086		65				1,158
Southern Connecticut State University					1,759		599	79	8		2,445
Western Connecticut State University			14		1,081		137	4	5		1,241
Connecticut Community College System	1,429	263	5,451								7,143
Asnuntuck Community College	194	87	149								430
Capital Community College	65	4	394								463
Gateway Community College	193	8	718								919
Housatonic Community College	69	46	502								617
Manchester Community College	116	10	742								868
Middlesex Community College	83		356								439
Naugatuck Valley Community College	308	45	759								1,112
Northwestern Connecticut Community College	52		194								246
Norwalk Community College	99		571								670
Quinebaug Valley Community College	52	22	200								274
Three Rivers Community College	60	16	443								519
Tunxis Community College	138	25	423								586
Charter Oak State College	68	1	73		451						593
Subtotal Public State Institutions	1,497	264	5,575	0	11,857	295	3,346	253	387	440	23,914
United States Coast Guard					198						198
Subtotal All Public Institutions	1,497	264	5,575	0	12,055	295	3,346	253	387	440	24,112

³ Previous reports about completions have aggregated post-master's certificates with master's degrees.

Institution	Undergrad certificate (< 1 year)	Undergrad certificate (1-2 years)	Associate's degree	Undergrad certificate (2-4 years)	Bachelor's degree	Postbacc. certificate	Master's degree ⁴	Post-master's certificate ⁴	Doctor's degree - research/scholarship	Doctor's degree - prof. practice	Grand Total
National Independent					3,132		1,892	466	383	334	6,207
Connecticut College					442						442
Trinity College					574		34				608
Wesleyan University					759		56	1	10		826
Yale University					1,357		1,802	465	373	334	4,331
Regional Independent	361	56	1,308	1	8,302	211	5,756	211	32	650	16,888
Albertus Magnus College	194	87	149								430
Fairfield University					928		393	28		36	1,385
Goodwin College	98	46	545		140						829
Graduate Institute, The						5	39				44
Hartford Seminary						34	21			7	62
Holy Apostles College and Seminary			1		21	4	80	2			108
Lincoln College of New England-Southington*		5	86		68						159
Mitchell College			10		118						128
Paier College of Art	2	5	2	1	21						31
Post University	103		188		849	45	225				1,410
Quinnipiac University					1,652	6	779	26		338	2,801
Sacred Heart University			2		1,134		1,120	66		78	2,400
St. Vincent's College			182		35						217
Saint Joseph College	2				221	67	485	10		86	873
University of Bridgeport			60		633	1	972	62	11	49	1,788
University of Hartford	55		150		988	2	556	12	21	56	1,840
University of New Haven	101		33		1,156	43	926	5			2,264
Two-Year Independent			14								29
Legion of Christ College of Humanities			14								14
Subtotal All Independent Institutions	361	56	1,322	1	11,434	211	7,648	677	415	945	23,109
Grand Total	1,858	320	6,897	1	23,489	506	10,994	930	802	1,424	47,221

* Formerly Briarwood College

Table 2. Degrees and Certificates Completed at Connecticut Colleges and Universities by Year and by Level

Year	Undergrad certificate (< 1 year)	Undergrad certificate (1-2 years)	Undergrad certificate (2-4 years)	Associate's degree	Bachelor's degree	Postbacc. certificate	Master's degree ⁴	Post-master's certificate	First professional degree	Doctor's degree	Doctor's degree – research scholarship	Doctor's degree - professional practice	Grand Total
1992-93	570			5,198	15,149		6,590	657	883	630			29,677
1993-94	676			5,171	14,152		6,649	657	844	646			28,795
1994-95	599	186		4,816	14,158	28	6,419	706	920	707			28,539
1995-96	645	178		4,789	13,814	31	6,715	693	921	676			28,462
1996-97	650	174		4,842	13,946	33	6,949	643	955	667			28,859
1997-98	636	136		4,500	14,102	31	7,161	581	884	686			28,717
1998-99	984	114		4,654	14,430	32	7,367	657	845	629			29,712
1999-00	797	456		4,385	14,548	2	7,163	788	951	667			29,757
2000-01	815	325		4,391	14,137	76	7,596	771	962	614			29,687
2001-02	855	191		4,469	14,819	139	7,520	914	992	599			30,498
2002-03	933	123		4,727	16,038	117	8,291	613	1,008	649			32,499
2003-04	1,011	75		4,807	16,857	200	8,419	649	949	692			33,659
2004-05	882	66	4	5,059	16,836	210	8,903	925	1,014	683			34,582
2005-06	913	57	8	5,018	18,001	315	8,684	909	1,054	735			35,694
2006-07	934	64	4	5,069	18,513	245	8,531	895	956	834			36,045
2007-08	1,045	49	5	5,085	18,930	191	8,697	916	944	772			36,634
2008-09	1,056	23	5	5,596	19,126	274	9,305	932			667	1,063	38,047
2009-10	1,717	58	3	5,580	19,703	439	8,723	844			670	1,175	38,912
2010-11	1,758	107	3	6,090	19,960	343	9,251	898			658	1,150	40,218
2011-12	1,886	246	1	6,564	20,931	457	9,467	934			772	1,245	42,503
2012-13	2,437	210	1	6,835	21,635	422	9,585	934			780	1,190	44,029
2013-14	2,360	131	1	7,143	21,905	452	9,538	930			796	1,315	44,571
2014-15	1,950	180	1	7,039	22,559	470	9,744	937			838	1,355	45,073
2015-16	2,037	322	0	7,339	22,714	523	10,917	1,090			834	1,218	46,994
2016-17	1,858	320	1	6,879	23,489	506	10,994	930			802	1,424	47,221

Table 4. Total Degrees and Certificates Completed by Year and by Race/Ethnicity

Year	Non-Resident Alien		Black, Non-Hispanic		Amer. Indian/Alaska Nat.		Asian or Pacific Islander		Hispanic		White, Non-Hispanic		Race/Ethnicity Unknown		Total
	N	Pct	N	Pct	N	Pct	N	Pct	N	Pct	N	Pct	N	Pct	N
1992-23	1,469	4.9%	1,253	4.2%	54	0.2%	796	2.7%	814	2.7%	24,078	81.1%	1,213	4.1%	29,677
1993-94	1,511	5.2%	1,292	4.5%	64	0.2%	948	3.3%	854	3.0%	23,174	80.5%	952	3.3%	28,795
1994-95	1,545	5.4%	1,351	4.7%	71	0.2%	919	3.2%	892	3.1%	22,734	79.7%	1,027	3.6%	28,539
1995-96	1,674	5.9%	1,462	5.1%	75	0.3%	1,050	3.7%	987	3.5%	22,404	78.7%	810	2.8%	28,462
1996-97	1,805	6.3%	1,548	5.4%	75	0.3%	1,078	3.7%	1,041	3.6%	22,187	76.9%	1,125	3.9%	28,859
1997-98	1,822	6.3%	1,575	5.5%	83	0.3%	1,110	3.9%	1,085	3.8%	22,005	76.6%	1,037	3.6%	28,717
1998-99	1,802	6.1%	1,715	5.8%	91	0.3%	1,260	4.2%	1,226	4.1%	22,356	75.2%	1,262	4.2%	29,712
1999-00	1,782	6.0%	1,835	6.2%	100	0.3%	1,217	4.1%	1,312	4.4%	22,251	74.8%	1,260	4.2%	29,757
2000-01	1,937	6.5%	1,867	6.3%	116	0.4%	1,184	4.0%	1,454	4.9%	21,503	72.4%	1,626	5.5%	29,687
2001-02	2,011	6.6%	1,915	6.3%	94	0.3%	1,188	3.9%	1,416	4.6%	21,508	70.5%	2,366	7.8%	30,498
2002-03	2,267	7.0%	2,153	6.6%	107	0.3%	1,313	4.0%	1,516	4.7%	22,691	69.8%	2,452	7.5%	32,499
2003-04	2,186	6.5%	2,433	7.2%	110	0.3%	1,342	4.0%	1,743	5.2%	23,380	69.5%	2,465	7.3%	33,659
2004-05	2,281	6.6%	2,478	7.2%	129	0.4%	1,371	4.0%	1,794	5.2%	23,847	69.0%	2,682	7.8%	34,582
2005-06	2,158	6.0%	2,720	7.6%	134	0.4%	1,451	4.1%	1,957	5.5%	24,413	68.4%	2,861	8.0%	35,694
2006-07	2,061	5.7%	2,698	7.5%	149	0.4%	1,534	4.3%	1,988	5.5%	24,601	68.3%	3,014	8.4%	36,045
2007-08	2,263	6.2%	2,629	7.2%	163	0.4%	1,551	4.2%	2,108	5.8%	24,943	68.1%	2,977	8.1%	36,634
2008-09	2,639	6.9%	2,821	7.4%	125	0.3%	1,677	4.4%	2,371	6.2%	25,254	66.4%	3,160	8.3%	38,047
2009-10	2,564	6.6%	2,767	7.1%	141	0.4%	1,751	4.5%	2,539	6.5%	25,160	64.7%	3,990	10.3%	38,912
2010-11	2,542	6.3%	2,920	7.3%	102	0.3%	1,669	4.1%	2,847	7.1%	24,829	61.7%	4,767	11.9%	40,218
2011-12	2,538	6.0%	3,363	7.9%	113	0.3%	1,920	4.5%	3,238	7.6%	26,645	62.7%	4,174	9.8%	42,503
2012-13	2,534	5.8%	3,372	7.7%	109	0.2%	2,027	4.6%	3,507	8.0%	27,731	63.0%	4,058	9.2%	44,029
2013-14	2,437	5.5%	3,628	8.1%	106	0.2%	2,088	4.7%	3,746	8.4%	28,121	63.1%	3,614	8.1%	44,571
2014-15	2,731	6.1%	3,718	8.3%	127	0.3%	2,305	5.1%	4,071	9.1%	26,777	59.6%	4,096	9.1%	44,934
2015-16	4,318	9.2%	3,994	8.5%	115	0.2%	2,158	4.6%	4,431	9.4%	27,595	58.7%	3,401	7.2%	46,994
2016-17	4,390	9.3%	4,066	8.6%	199	0.4%	2,259	4.8%	4,672	9.9%	26,633	56.4%	3,852	8.2%	47,221

For reporting through 1988-89, institutions were discouraged from reporting individuals under the race/ethnicity unknown category and instead allowed to use various means to determine the race/ethnicity of individuals beyond self-report. These data are only available with race/ethnicity unknown "distributed" across race/ethnicity categories.

Table 5. Total Degrees and Certificates Completed by Sector and Gender and by Year

Sector	Gender	2006-07	2007-08	2008-09	2009-10	2010-11	2011-12	2012-13	2013-14	2014-15	2015-16	2016-17
University of Connecticut	Men (N)	2,968	3,090	3,176	3,175	3,343	3,634	3,565	3,676	3,714	3,778	4,101
	Women (N)	3,686	3,785	3,802	3,871	3,826	4,136	4,056	4,195	4,366	4,277	4,510
	(Pct)	55.4%	55.1%	54.5%	54.9%	53.4%	53.2%	53.2%	53.3%	54.0%	53.1%	52.4%
Connecticut State University System	Men (N)	2,328	2,428	2,505	2,595	2,712	2,808	2,833	2,823	2,931	2,945	3,021
	Women (N)	4,144	4,442	4,262	4,410	4,480	4,667	4,680	4,557	4,389	4,492	4,546
	(Pct)	64.0%	64.7%	63.0%	63.0%	62.3%	62.4%	62.3%	61.7%	60.0%	60.4%	60.1%
Connecticut Community College System	Men (N)	1,575	1,695	1,857	2,098	2,429	2,627	3,043	3,231	3,072	3,161	2,888
	Women (N)	3,084	3,109	3,291	3,483	3,853	4,115	4,366	4,518	4,260	4,567	4,255
	(Pct)	66.2%	64.7%	63.9%	62.4%	61.3%	61.0%	58.9%	58.3%	58.1%	59.1%	59.6%
Other Public Institutions	Men (N)	378	353	376	384	411	363	349	338	351	223	340
	Women (N)	443	351	335	335	459	534	481	466	470	456	451
	(Pct)	54.0%	49.9%	47.1%	46.6%	52.8%	59.5%	58.0%	58.0%	57.2%	67.2%	57.0%
National Independent Institutions	Men (N)	2,767	2,851	2,759	2,824	2,778	2,743	2,926	2,941	3,082	3,065	2,995
	Women (N)	2,972	2,957	2,981	2,992	2,954	3,064	3,067	3,078	3,024	3,168	3,212
	(Pct)	51.8%	50.9%	51.9%	51.4%	51.5%	52.8%	51.2%	51.1%	49.5%	50.8%	51.7%
Regional Independent Institutions	Men (N)	4,279	4,392	4,816	4,651	4,745	4,980	5,262	5,313	5,586	6,548	6,503
	Women (N)	6,892	6,590	7,125	7,274	7,999	8,572	9,198	9,424	9,659	10,285	10,385
	(Pct)	61.7%	60.0%	59.7%	61.0%	62.8%	63.3%	63.6%	63.9%	63.4%	61.1%	61.5%
Two-Year Independent Institutions	Men (N)	135	178	242	202	62	60	38	11	30	29	14
	Women (N)	394	413	520	618	167	287	165	0	0	0	0
	(Pct)	74.5%	69.9%	68.2%	75.4%	72.9%	82.7%	81.3%	0.0%	0.0%	0.0%	0.0%
Grand Total	Men (N)	14,430	14,987	15,731	15,929	16,480	17,215	18,016	18,333	18,776	19,749	19,862
	Women (N)	21,615	21,647	22,316	22,983	23,738	25,375	26,013	26,238	26,168	27,245	27,359
	(Pct)	60.0%	59.1%	58.7%	59.1%	59.0%	59.6%	59.1%	58.9%	58.2%	58.0%	57.9%

Table 6. Degrees and Certificates Completed at Connecticut Colleges and Universities by Discipline and by Year

Discipline		Year										
		2006-07	2007-08	2008-09	2009-10	2010-11	2011-12	2012-13	2013-14	2014-15	2015-16	2015-16
Agriculture & Resource Conservation	N	426	418	412	449	487	534	558	569	686	613	605
	Pct	1.2%	1.1%	1.1%	1.2%	1.2%	1.2%	1.3%	1.3%	1.5%	1.3%	1.3%
Arts & Humanities	N	9,354	9,311	9,590	9,534	10,003	10,194	10,270	10,351	9,941	9,903	9,381
	Pct	26.0%	25.4%	25.2%	24.5%	24.9%	24.0%	23.3%	23.2%	22.1%	21.1%	19.9%
Business	N	6,551	6,473	6,702	6,956	7,216	7,108	6,989	7,079	7,477	7,860	8,158
	Pct	18.2%	17.7%	17.6%	17.9%	17.9%	16.7%	15.9%	15.9%	16.6%	16.7%	17.3%
Criminal Justice & Protective Services	N	950	1,106	1,031	1,088	1,079	1,287	1,437	1,452	1,614	1,713	1,734
	Pct	2.6%	3.0%	2.7%	2.8%	2.7%	3.0%	3.3%	3.3%	3.6%	3.6%	3.7%
Education	N	3,636	3,590	3,512	3,397	3,474	3,843	3,868	3,706	3,554	3,511	3,235
	Pct	10.1%	9.8%	9.2%	8.7%	8.6%	9.0%	8.8%	8.3%	7.9%	7.5%	6.9%
Family Sciences, Social Work, & Public Admin	N	1,234	1,247	1,363	1,412	1,526	1,548	1,488	1,583	1,592	1,688	1,638
	Pct	3.4%	3.4%	3.6%	3.6%	3.8%	3.6%	3.4%	3.6%	3.5%	3.6%	3.5%
Health & Fitness	N	4,033	4,301	4,661	5,090	5,474	6,114	6,754	7,128	7,281	7,828	8,320
	Pct	11.2%	11.7%	12.3%	13.1%	13.6%	14.4%	15.3%	16.0%	16.2%	16.7%	17.6%
Science, Technology, Engineering & Math	N	4,268	4,599	5,024	5,063	5,071	5,642	5,900	6,051	6,526	7,565	7,845
	Pct	11.8%	12.6%	13.2%	13.0%	12.6%	13.3%	13.4%	13.6%	14.5%	16.1%	16.6%
Social Sciences	N	4,450	4,472	4,643	4,730	4,731	4,817	4,916	4,843	4,870	4,899	4,855
	Pct	12.3%	12.2%	12.2%	12.2%	11.8%	11.3%	11.2%	10.9%	10.8%	10.4%	10.3%
Other (Architecture, Law, Library Science)	N	1,064	1,012	1,026	1,076	1,042	1,147	1,210	1,149	1,099	950	973
	Pct	3.0%	2.8%	2.7%	2.8%	2.6%	2.7%	2.7%	2.6%	2.4%	2.0%	2.1%
Various Technicians and Trades	N	79	105	83	117	115	269	639	660	433	464	477
	Pct	0.2%	0.3%	0.2%	0.3%	0.3%	0.6%	1.5%	1.5%	1.0%	1.0%	1.0%
Grand Total	N	36,045	36,634	38,047	38,912	40,218	42,503	44,029	44,571	45,073	46,994	47,221
	Pct	100.0%	100.0%	100.0%	100.0%	100.0%	100.0%	100.0%	100.0%	100.0%	100.0%	100.0%

Changes in CIP codes over time complicate disciplinary groupings; titles listed below adopt the CIP 2010 naming conventions, completions reported under CIP 2000 and CIP 1990 are mapped accordingly. For the purposes of this analysis, **Agriculture & Resource Conservation** includes CIP 01 Agriculture, Agriculture Operations, and Related Sciences, CIP 02 Agricultural Sciences, and CIP 03 Natural Resources And Conservation; **Arts & Humanities** includes CIP 05 Area, Ethnic, Cultural, Gender, and Group Studies, CIP 09 Communication, Journalism, And Related Programs, CIP 16 Foreign Languages, Literatures, and Linguistics, CIP 23 English Language and Literature/Letters, CIP 24 Liberal Arts and Sciences, General Studies and Humanities, CIP 30 Multi/Interdisciplinary Studies, CIP 38 Philosophy and Religious Studies, CIP 39 Theology and Religious Vocations, CIP 50 Visual and Performing Arts, CIP 54 History (and CIP 45.08 History when reported in the CIP 1990 code set); **Business** includes CIP 08 Sales And Marketing Operations/Marketing And Distribution (from the CIP 1990 code set) and CIP 52 Business, Management, Marketing, And Related Support Services; **Criminal Justice & Protective Services** include CIP 43 Homeland Security, Law Enforcement, Firefighting And Related Protective Services; **Education** includes CIP 13 Education; **Family Sciences, Social Work, and Public Admin** includes CIP 19 Family and Consumer Sciences/Human Sciences, CIP 20 Vocational Home Economics, and CIP 44 Public Administration and Social Service Professions; **Health & Fitness** includes CIP 31 Parks, Recreation, Leisure, And Fitness Studies, and CIP 51 Health Professions and Related Programs; **Science, Technology, Engineering & Math** includes CIP 11 Computer And Information Sciences and Support Services, CIP 14 Engineering, CIP 15 Engineering Technologies and Engineering-Related Fields, CIP 26 Biological and Biomedical Sciences, CIP 27 Mathematics and Statistics, CIP 40 Physical Sciences, and CIP 41 Science Technologies/Technicians; **Social Sciences** includes CIP 42 Psychology, CIP 45 Social Sciences (excluding CIP 45.08 History for the 1990 code set); **Other (Architecture, Law, Library Science)** includes CIP 04 Architecture And Related Services, CIP 22 Legal Professions and Studies, and CIP 25 Library Science; **Various**

Technicians and Trades includes CIP 10 Communications Technologies/Technicians and Support Services, CIP 12 Personal and Culinary Services, CIP 46 Construction Trades (1990 code set), CIP 47 Mechanic and Repair Technologies/Technicians, CIP 48 Precision Production, and CIP 49 Transportation and Materials Moving.

About the Data

Data provide in this report were extracted from the Connecticut Office of Higher Education (CT OHE) completions database as of January 1, 2018. Data in this resource are collected from higher education institutions by CT OHE in conjunction with reporting to the federal Integrated Postsecondary Education Data System (IPEDS) as required by the Higher Education Opportunity Act. In Connecticut, higher education institutions report submissions for the IPEDS fall enrollment survey and the completions survey to CT OHE using a macro-enabled Excel workbook. Institutions report information for all other IPEDS surveys directly to the U.S. Department of Education. This workbook performs a number of quality control checks to improve data integrity. CT OHE then uploads data in a batch to IPEDS and institutions check submissions before locking the data. These data are also stored in a database at CTDHE for agency reporting. These data are accessible via the internet at <http://www.ctohe.org/News/Publications.shtml> and these data very closely correspond to figures that appear in the IPEDS Data Center (<http://www.nces.ed.gov/ipeds/datacenter/>).

While these control processes and mechanisms improve data quality, reporting errors occasionally are still found by institutions or by CT OHE following the close of the official reporting period. IPEDS has a specific process for making adjustments to data from the prior year, but these procedures do not always require notification of CT OHE, and so in instances where institutions have made prior year adjustments, these data may not be reflected in CT OHE databases. Conversely, some adjustments have been made to OHE databases over time that may not be reflected in the IPEDS Data Center. Thus, minor discrepancies may be observed between data presented in this report and some figure obtained from the IPEDS Data Center as well as some previous reports issued by CT OHE.